

# CERTIFICATE OF LOCATION OF GOVERNMENT CORNER

NORTHEAST Corner of Section 17, Township 108, Range 41, 5TH P.M.

STATE OF MINNESOTA, County of MURRAY

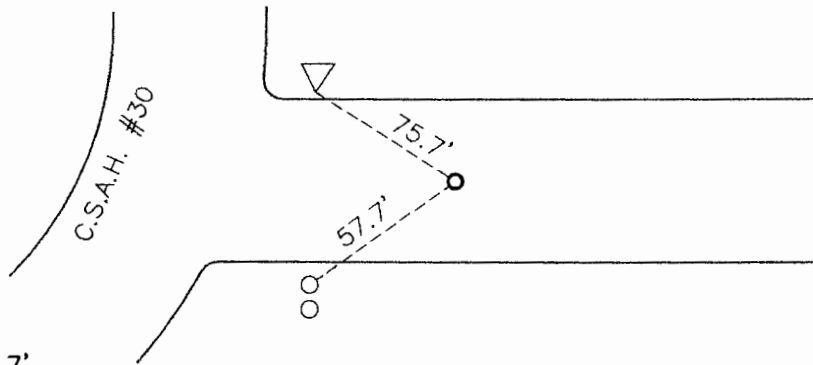
At the corner location shown on the sketch:

On 06-12-2006 found a IRON T-BAR NEAR ROAD SURFACE  
DATE

left monument as found,  lowered monument,  removed monument (explain)

On \_\_\_\_\_ placed a \_\_\_\_\_  
DATE

### SKETCH OF REFERENCE TIES



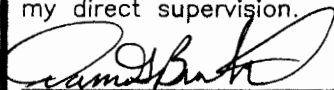
YIELD SIGN POST WNW 75.7'  
NORTH POST OF LOW MAINTENANCE SIGN WSW 57.7'

Minnesota State Plane Coordinate  
System Murray County Datum  
NAD83 (1996)

N: 216324.751  
E: 495387.426

Statement of evidence relative to this corner location is on back of page.

I hereby certify that this document and the data contained herein was prepared by me or under my direct supervision.

  
SIGNATURE

June 23, 2006  
DATE

Registration No. 43844

- Land Surveyor,  Professional Engineer  
 County Surveyor,  County Engineer

OFFICE OF THE COUNTY RECORDER  
County of \_\_\_\_\_

I hereby certify that this document was filed in the Co. Recorders office at \_\_\_\_\_ .M on the \_\_\_\_\_ day of \_\_\_\_\_ A.D. 20 \_\_\_\_\_

County Recorder \_\_\_\_\_

By \_\_\_\_\_, Deputy

DOCUMENT NO. \_\_\_\_\_

## Statement of Evidence

The original survey did not set this corner but did position its location by offset.

In May 1931, F. A. March established this corner on line of NW corner and W  $\frac{1}{4}$  corner at 2640' from W  $\frac{1}{4}$  corner. He placed a 12x12x20 stone for the corner. Lake apparently had receded. Appears to have been used again in 1934 with ties taken, the ties are gone.

On 07-18-2002 Gerald Vickermann dug for the corner in the center of gravel road. He dug through 9-10" of rock and gravel then through 3' of black dirt. Found a large stone 4' down at a point level with crushed reeds. Top of stone just above reed level, the bottom is unknown as water was seeping into the hole. Accepted as the corner stone, tied out and set an iron T-bar over stone.

On June 12, 2006 Bueltel-Moseng Land Surveying found an iron T-bar.